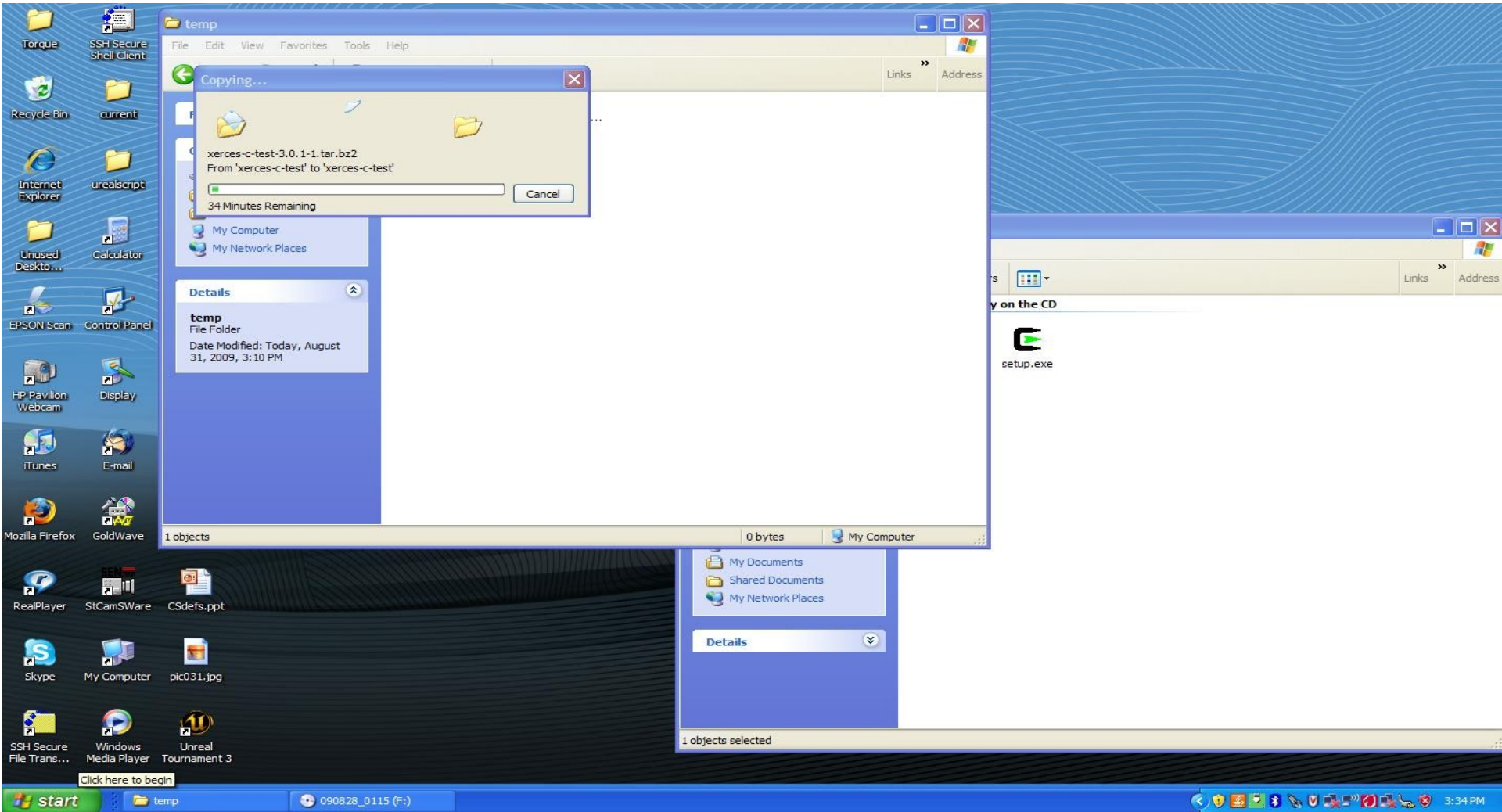


A decorative graphic consisting of a thin gold circle on the left side. A thick horizontal bar with a gold-to-white gradient extends across the top. A large black left square bracket is on the left side of the bar, and a large gold right square bracket is on the right side. The text 'Installing cygwin' is centered within the bar.

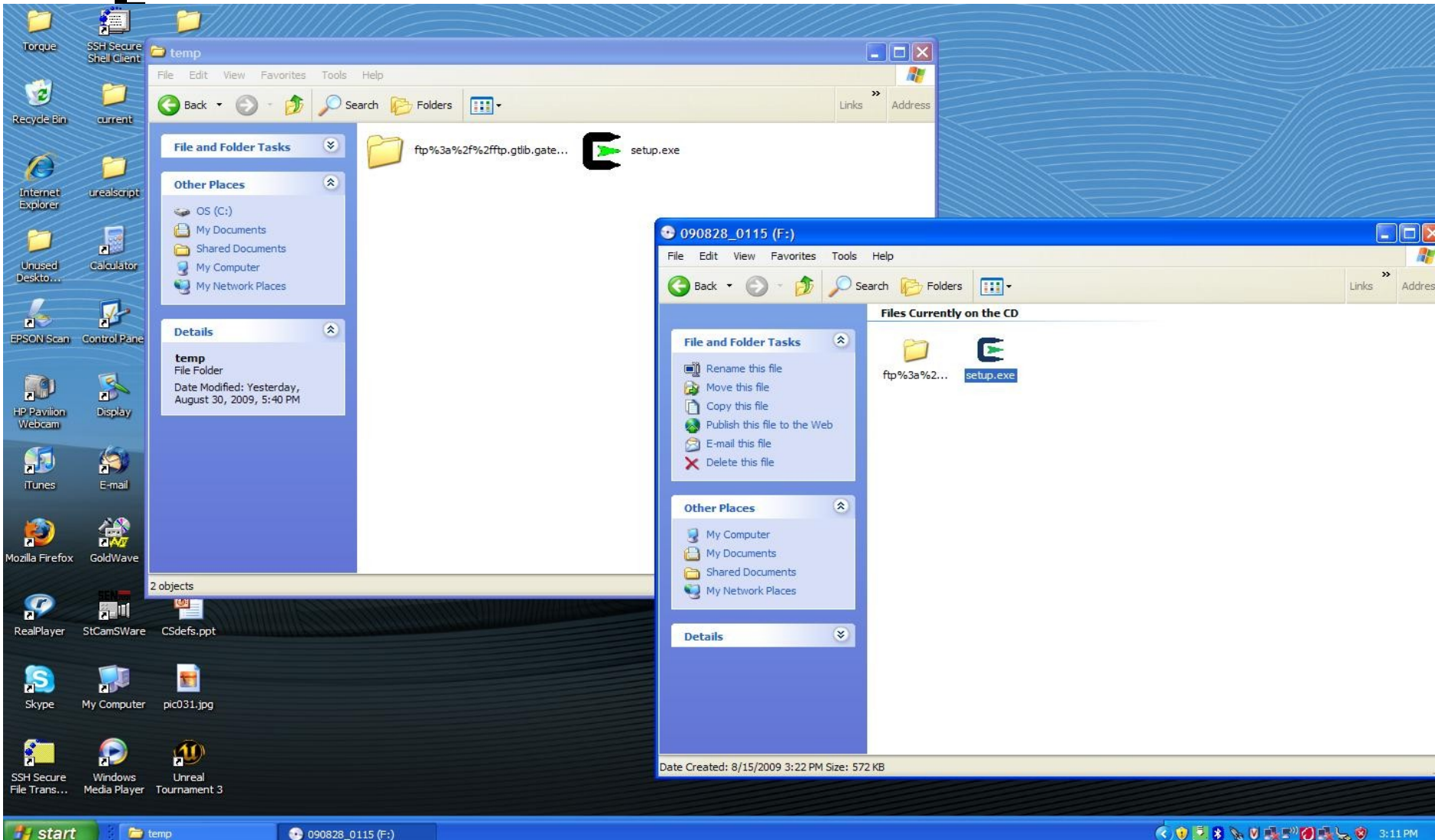
Installing cygwin

- Copy to local folder
- Setup

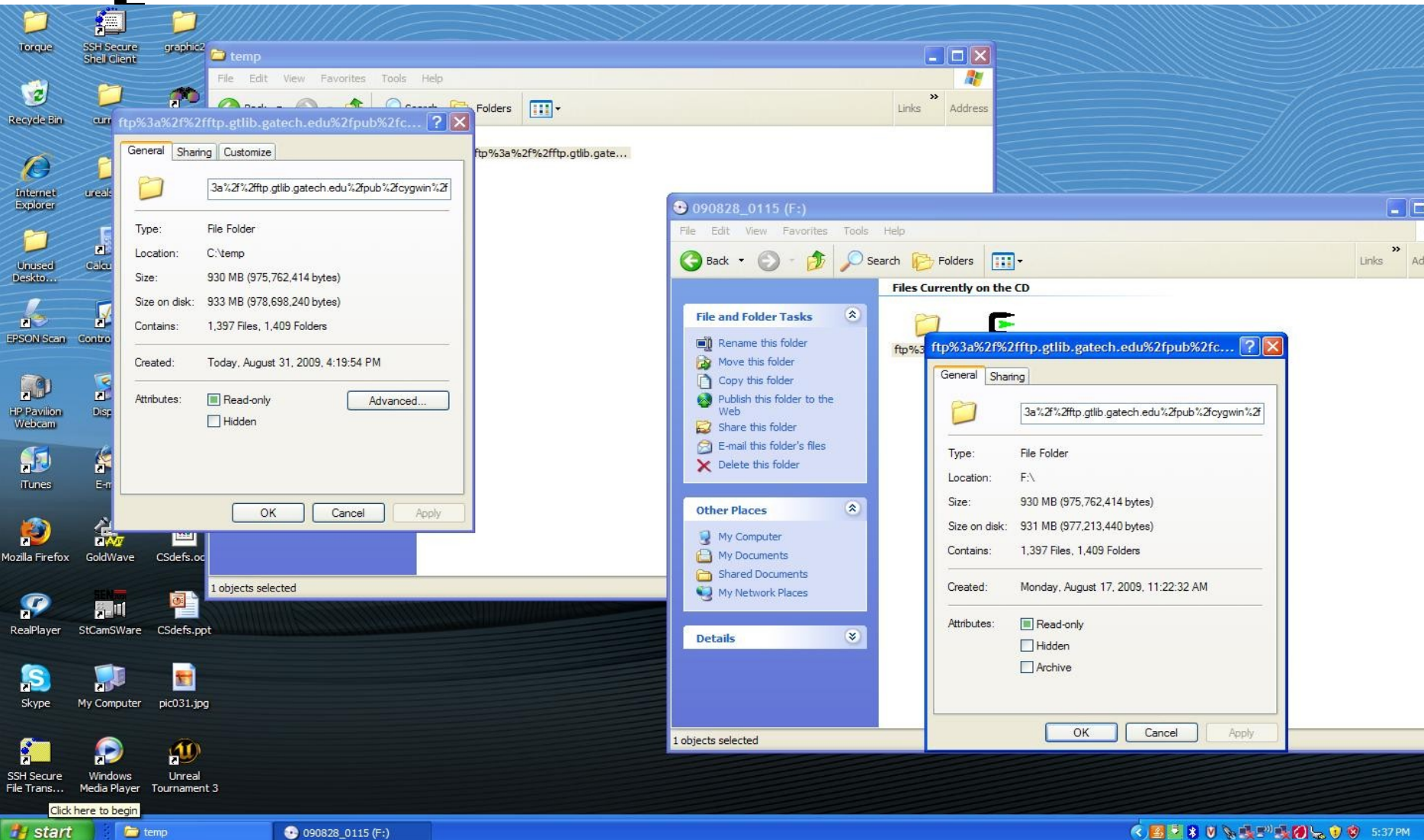
Copy Disk to Folder



Verify Disk Copied Correctly



Verify Disk Copied Correctly




Click on setup.exe, then Next

The screenshot shows a Windows desktop environment with a blue background. In the foreground, the 'Cygwin Net Release Setup Program' window is open, displaying the following text:

Cygwin Net Release Setup Program

This setup program is used for the initial installation of the Cygwin environment as well as all subsequent updates. Make sure to remember where you saved it.

The pages that follow will guide you through the installation. Please note that Cygwin consists of a large number of packages spanning a wide variety of purposes. We only install a base set of packages by default. You can always run this program at any time in the future to add, remove, or upgrade packages as necessary.

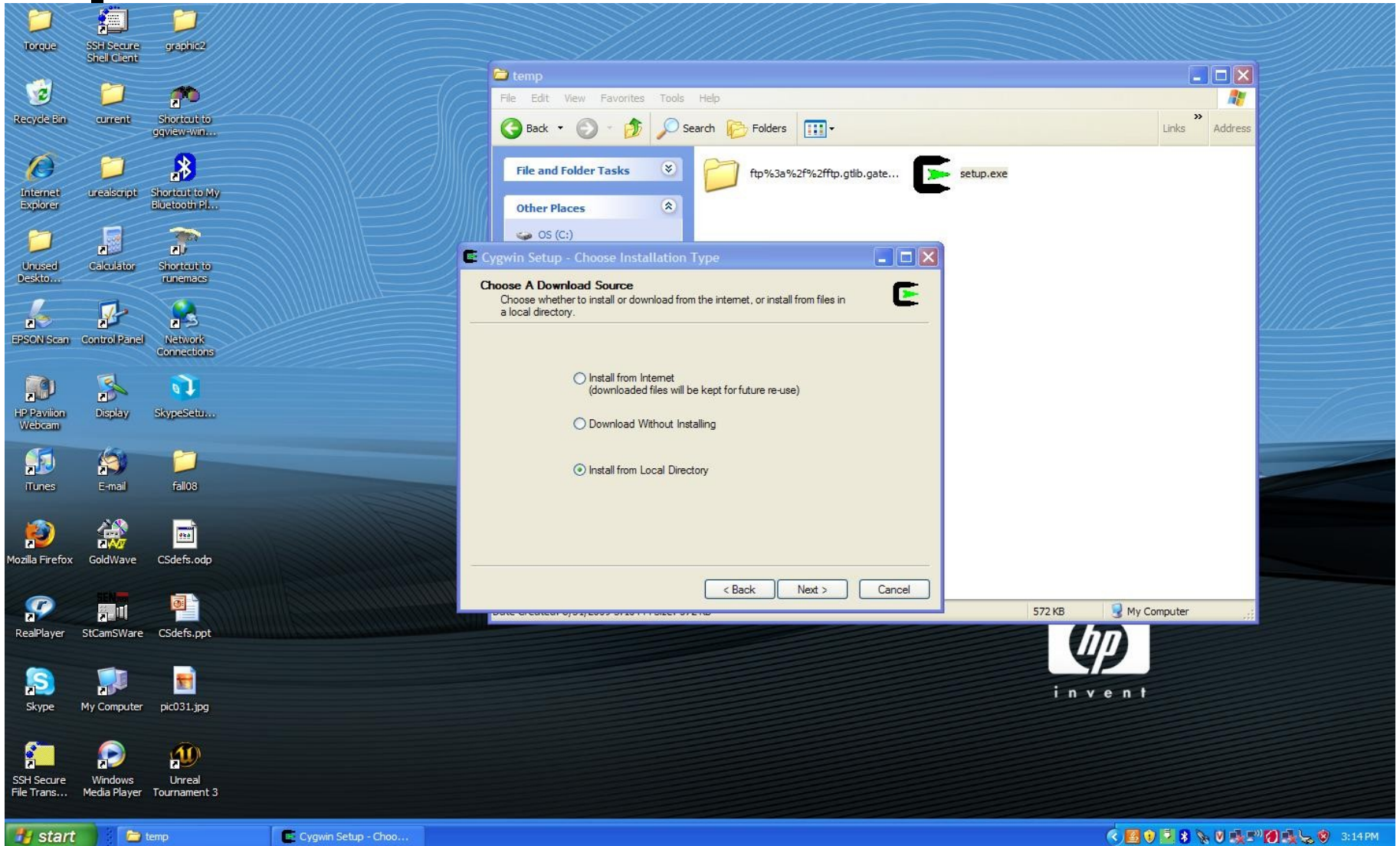


Setup.exe version 2.573.2.3
Copyright 2000-2007
<http://www.cygwin.com/>

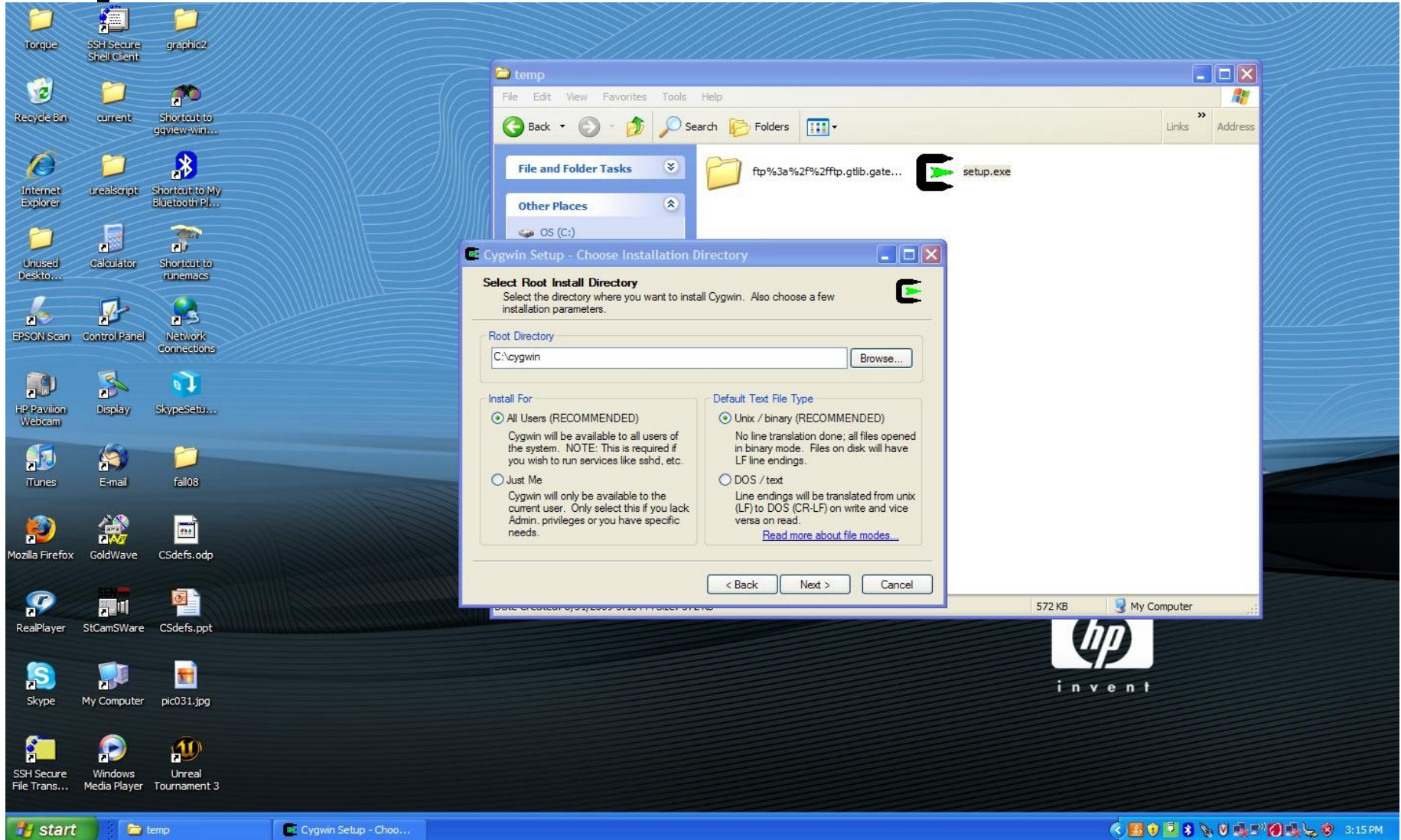
At the bottom of the window are three buttons: '< Back', 'Next >', and 'Cancel'.

In the background, a File Explorer window is open to the 'temp' folder, showing a file named 'setup.exe' with a green arrow icon. The taskbar at the bottom shows the 'start' button, the 'temp' folder icon, and the 'Cygwin Setup' application icon. The system tray on the right shows the time as 3:13 PM.

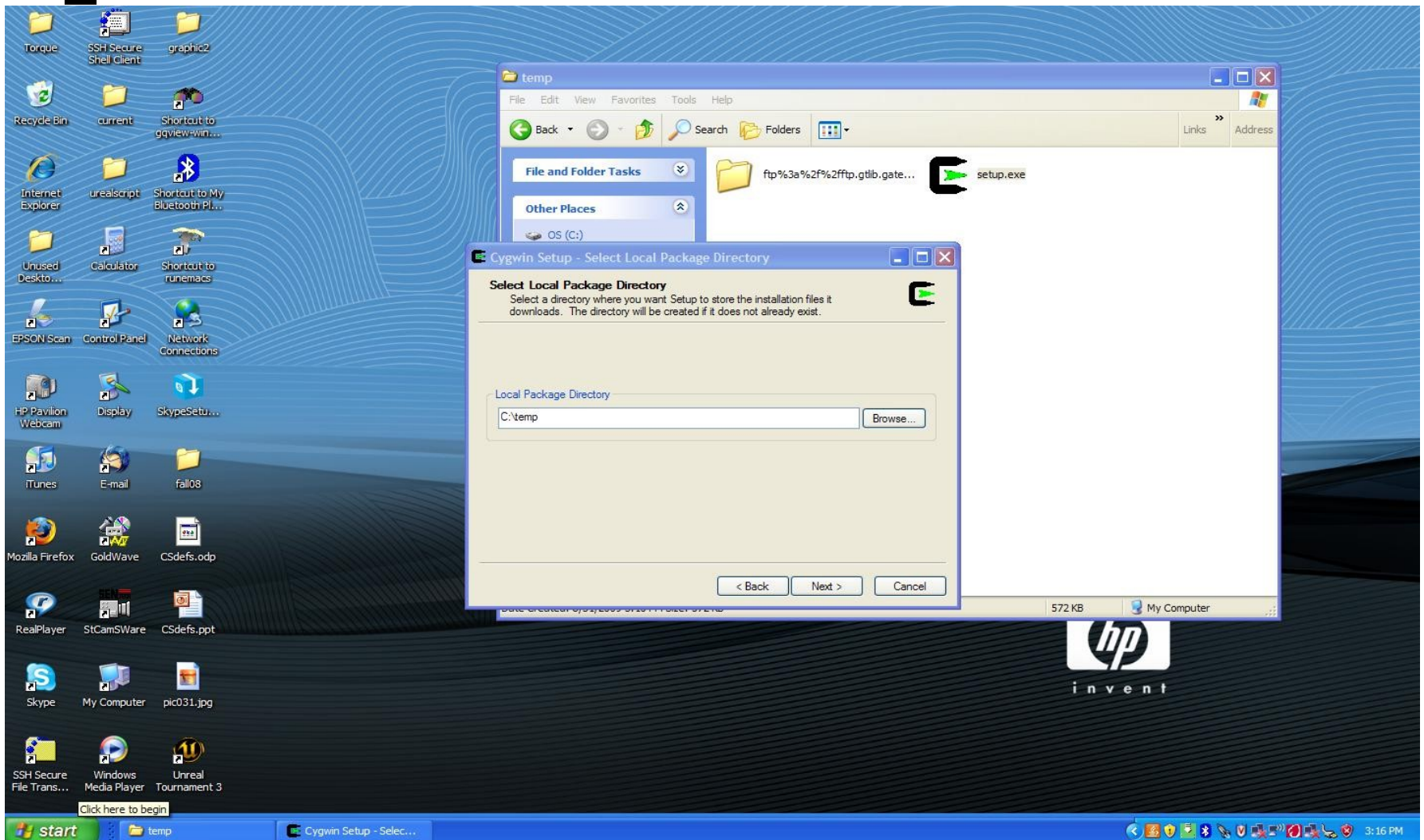
Choose Local Directory; Click Next



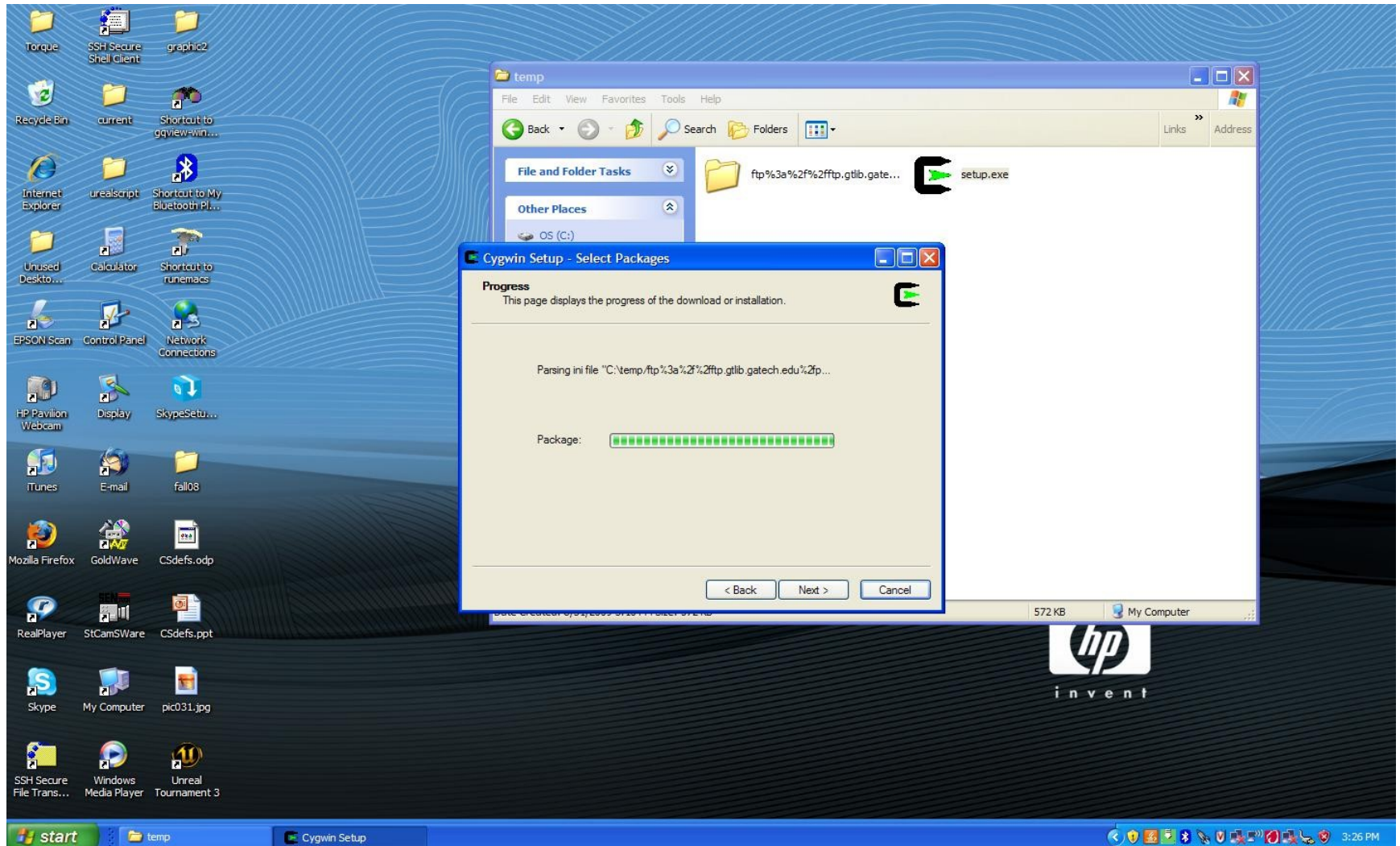
Select Indicated Options; Click Next



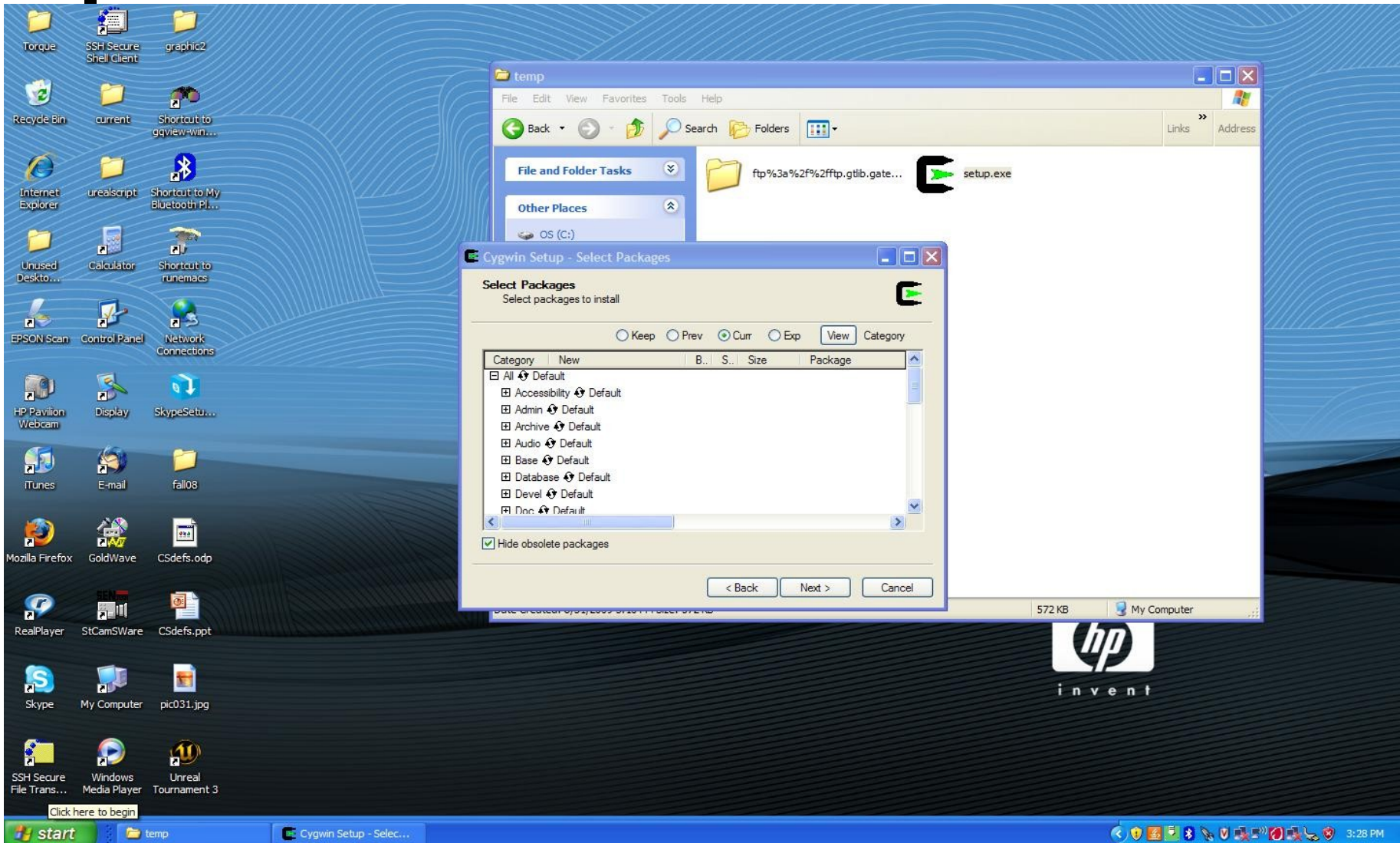
Select YOUR Source Folder; Click Next



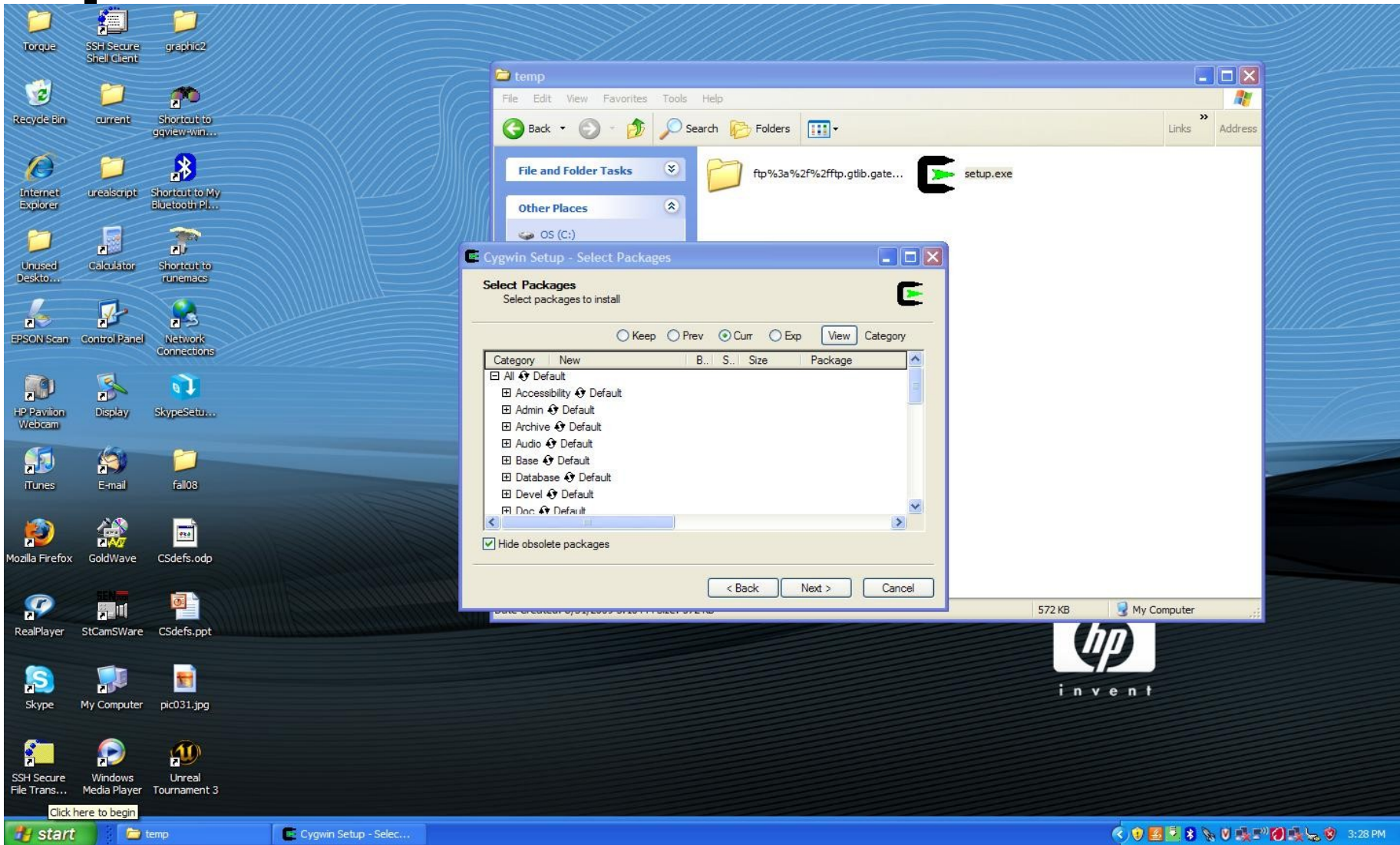
Wait; Click Next



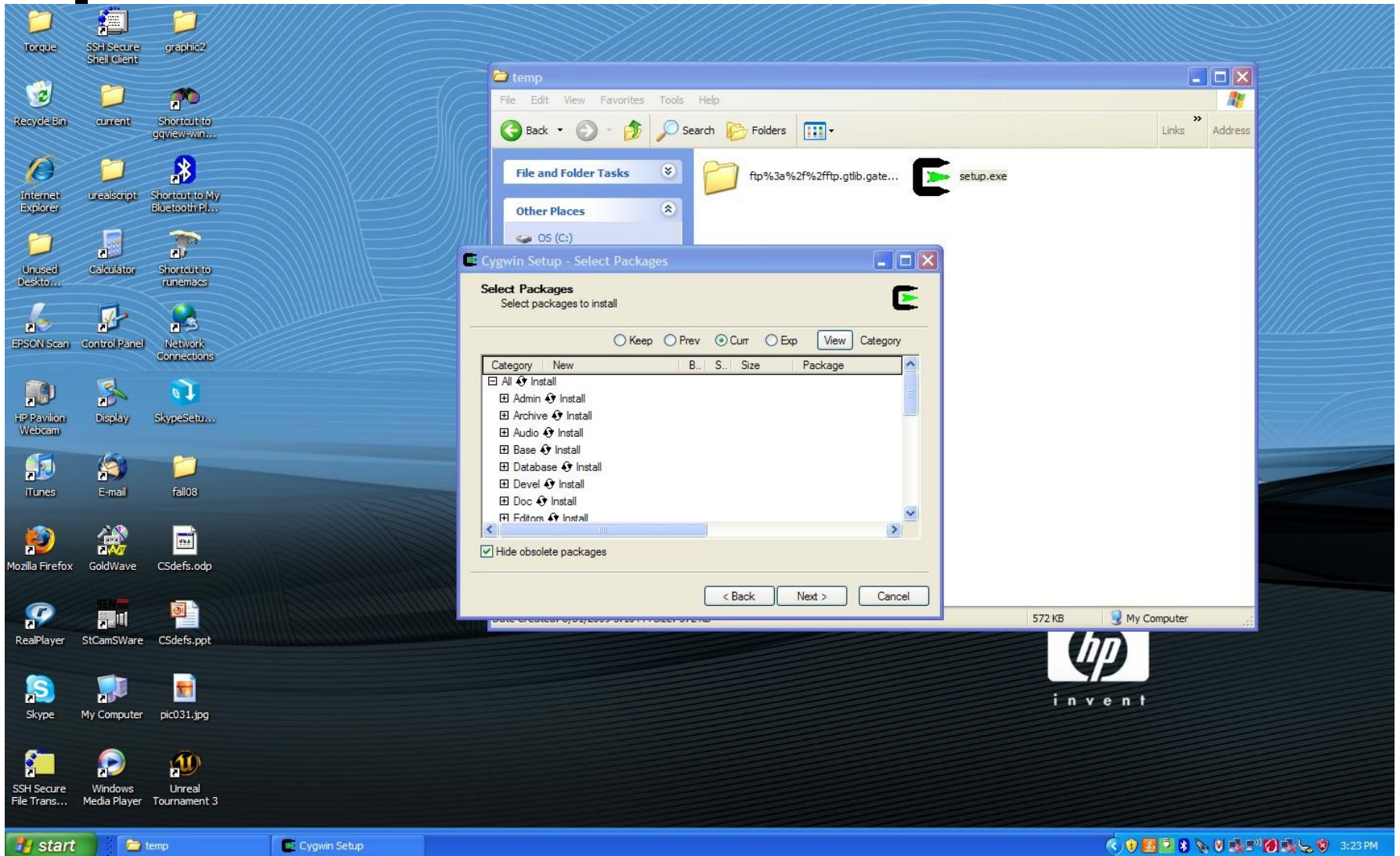
Click on All-Default



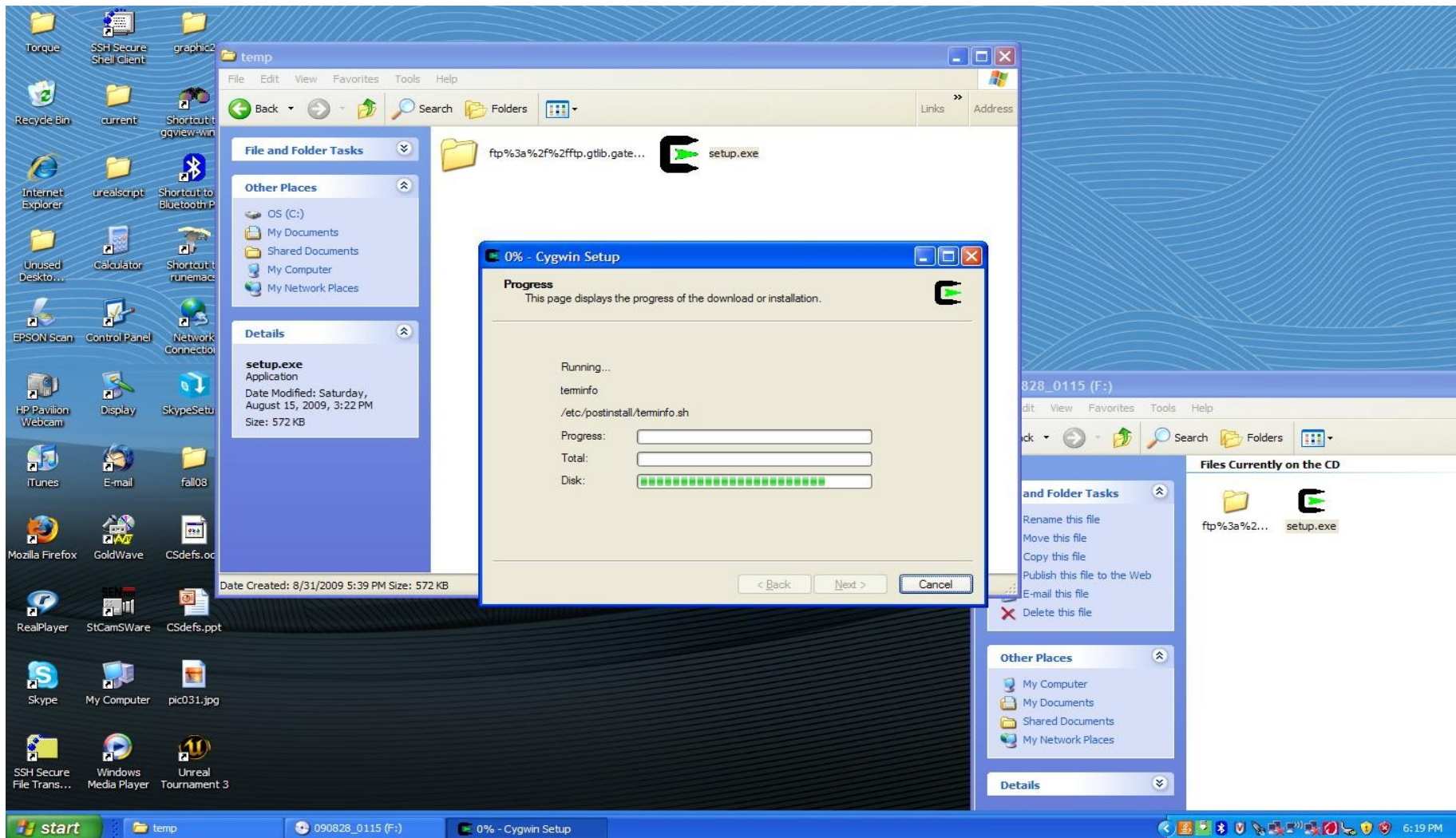
Window changes slowly, so click and wait a bit.



Select Package Window Must Be as Shown. Then Click Next



Wait; Click Next When Available



Choose Option; Click Finish

